

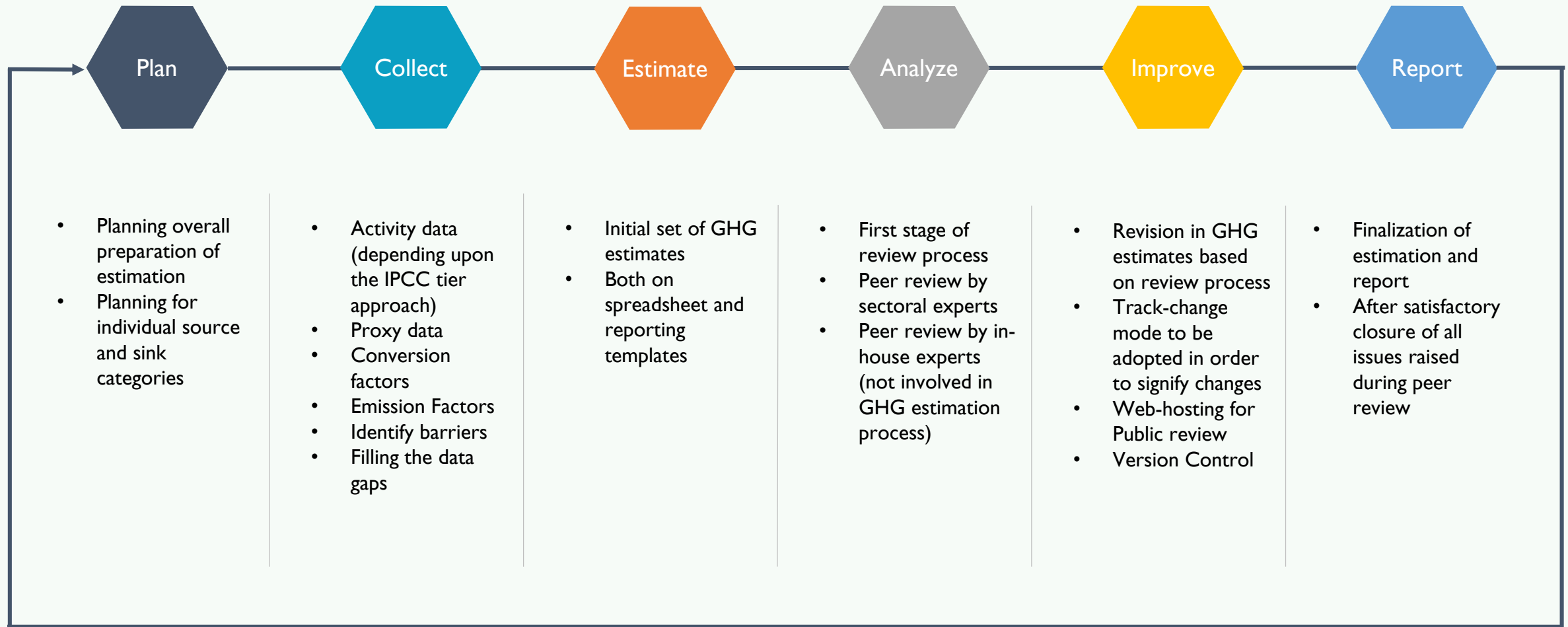
Methodology and Results for India's GHG Emission Estimates for 2005-2013

Date : 28 September 2017

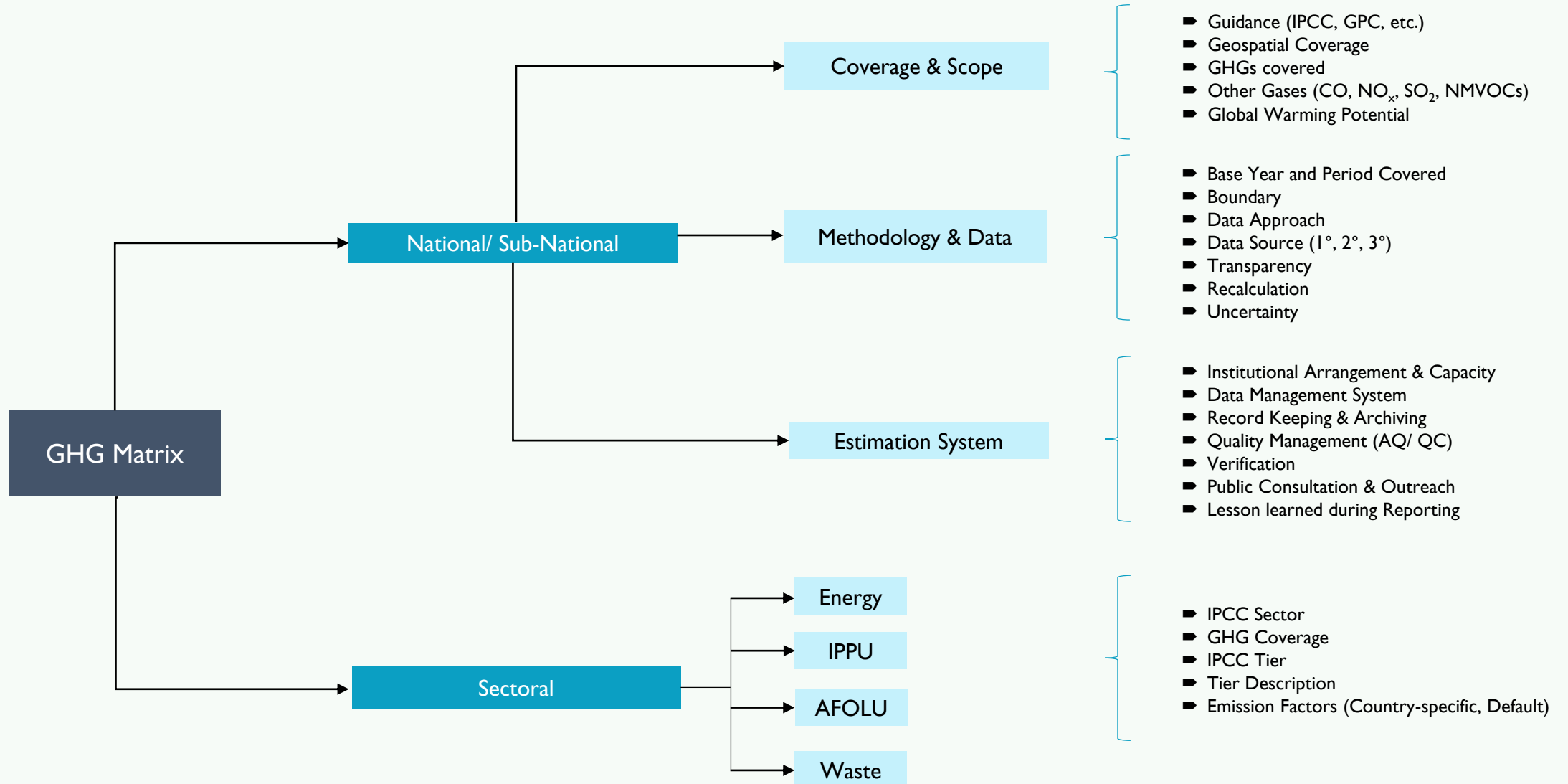
Venue : India Habitat Center, Delhi



Phase II



GHG Matrix



Key Information



Guidance

Flexibility to choose from IPCC Good Practice Guidance and National Good Practice Guidance.

Choice on GWP

Reporting based on SAR values for comparability with NATCOM Reports;
Reporting based on latest AR values to be in-line with IPCC good practice.

GHG Boundary

Clear guidance on physical perimeter of inventory boundary;
Two levels of classification:
1. National; and
2. State level

Data Approach

Guidance on data approach (top-down or bottom-up);
Apportionment guide (e.g. econometric, FY to CY)

QA/ QC

Guidance on ensuring quality of GHG estimates
(e.g. AD, EF, assumptions, time series consistency, calculations, completeness, etc.)

Recalculation

Clear guidance on possible reasons;
Clear guidance on reporting of recalculations to ensure accuracy and completeness.

Uncertainty

Identifying and Reporting on type of uncertainty;
Good practice guidance on statistical methods;
Combined uncertainties: IPCC Good Practice.

Specific Guidance

Agriculture, Forestry and Fishing;
On-road and off-road transportation;
Waste-to-Energy,
Others.

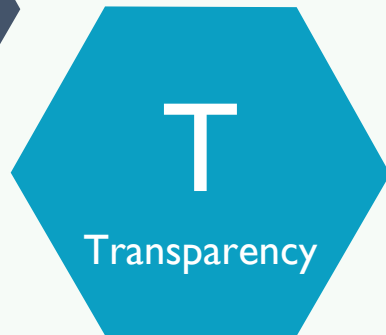
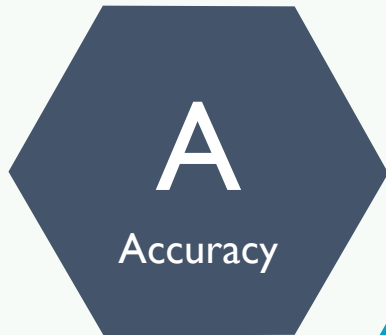


What are we trying to accomplish?

Quantification is neither over nor under actual emissions. Uncertainties are removed as far as practicable.

Consistent methodologies allows meaningful comparison of emissions over time.

Ensuring GHG emission estimates reflects the actual GHG emissions of national and/or state boundary



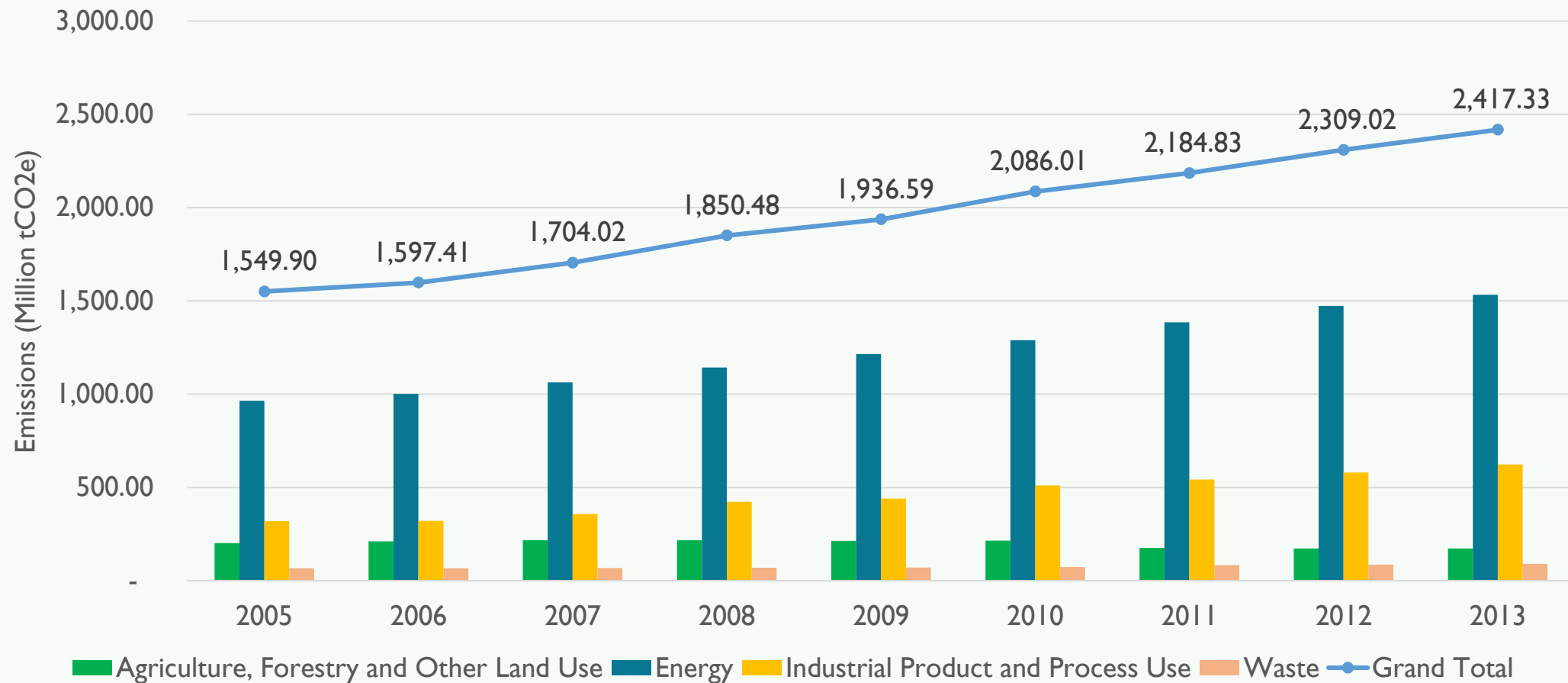
Disclosure of all assumptions and clarity on methodologies and data sources used.

Account for and report on all GHG emissions within boundary. Justify any specific exclusions.



National Estimates

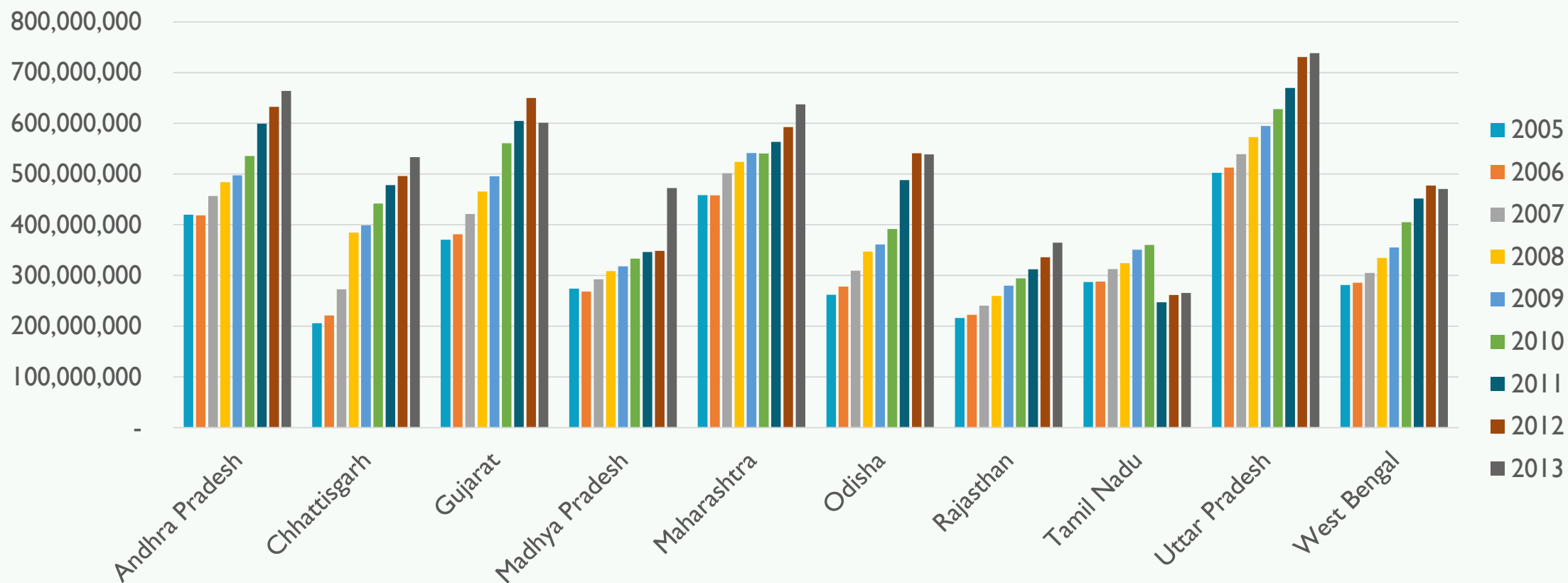
Trend of GHG Emissions from India (2005-13)



All emissions in Million tCO₂e

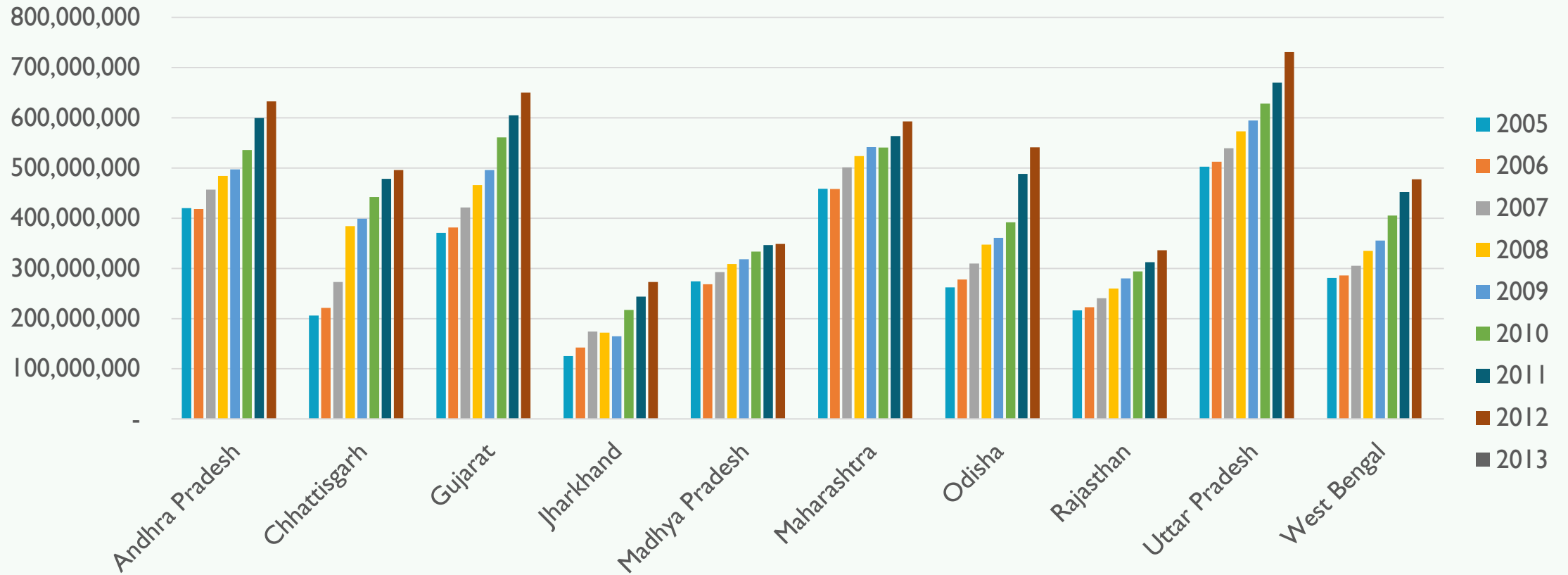


Top 10 States in 2005



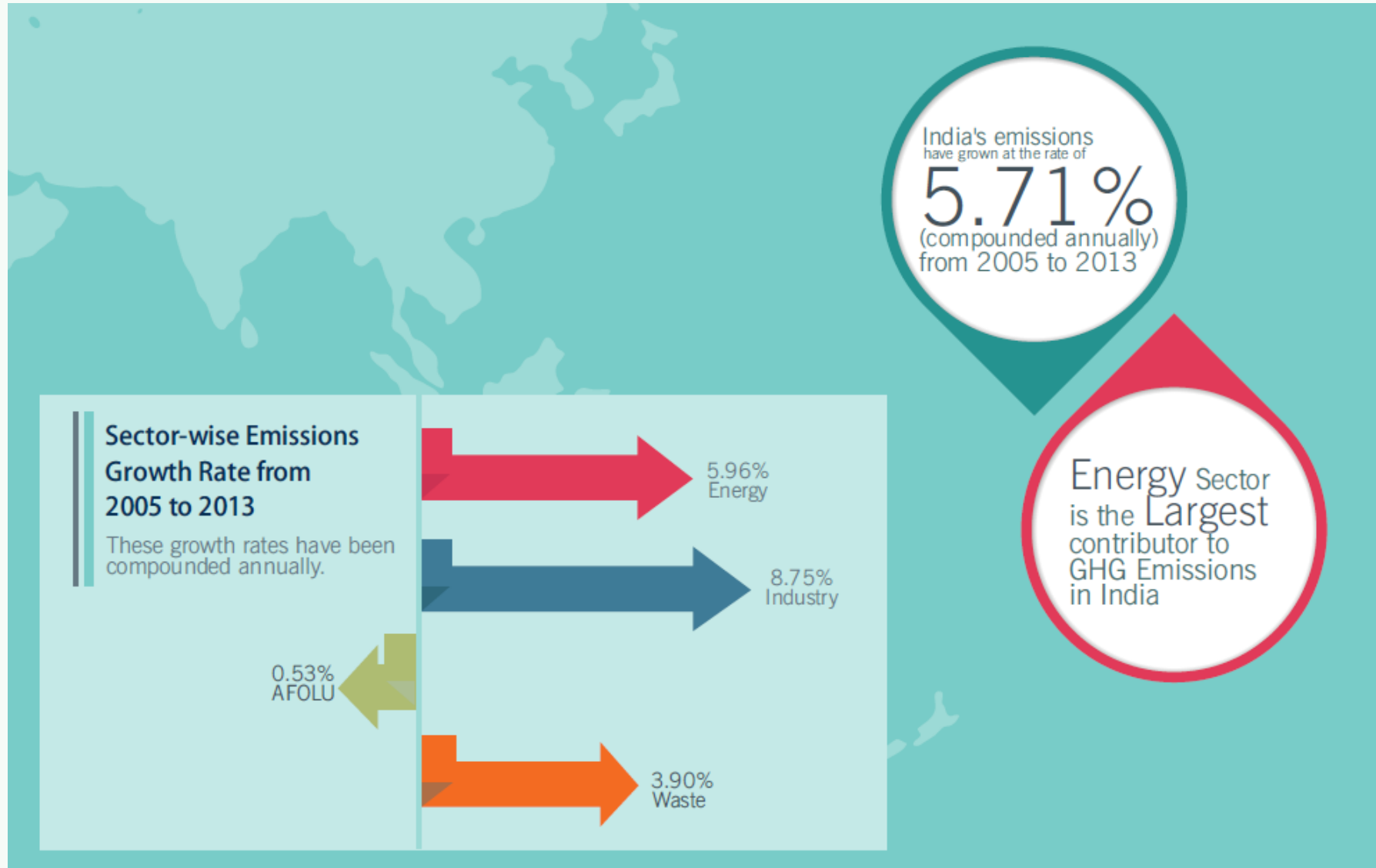


Top 10 States in 2013





Change in National GHG emissions





www.ghgplatform-india.org

